



**Rosehill Rail**



Approved by Network Rail  
Cert No. PA05/01732

**NOW AVAILABLE  
DIRECT FROM THE  
MANUFACTURER  
ROSEHILL RAIL**

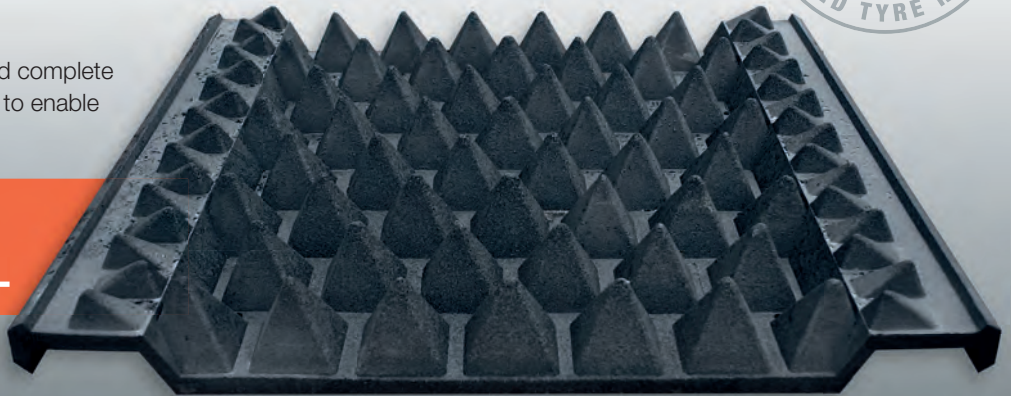
# The Rosehill Rail range of Network Rail approved Anti-Trespass panels.



The new style panel is intended for use in the four foot (gauge), fitting comfortably into the webs of the rails.

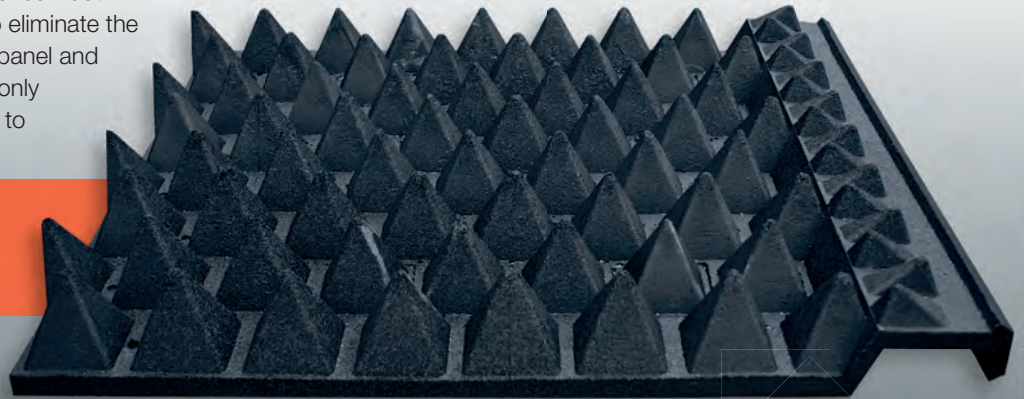
All the panels in the range are provided complete with plastic 'planks' and fixing screws to enable immediate mobilisation.

## **DOUBLE FLANGE STANDARD PANEL**



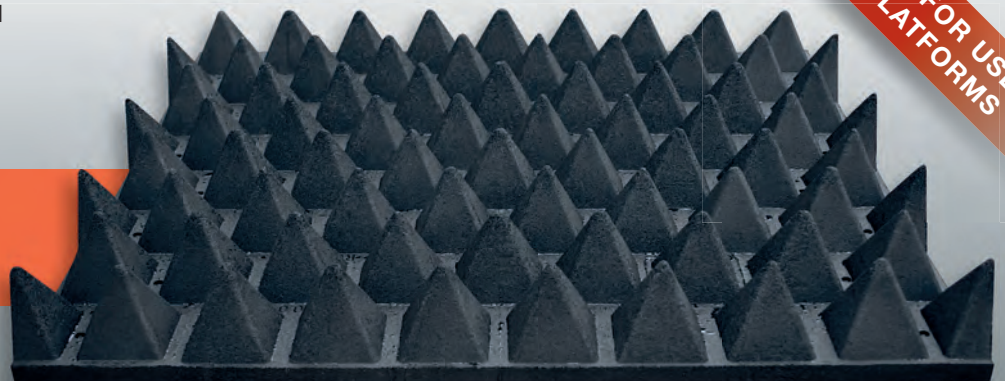
The single flange panel is a new concept. These will typically be fitted to the outside of the four foot. This full width panel was designed to eliminate the need to cut down the double flange panel and reduce on-site cutting. We have not only reduced waste, but made it possible to speed up installation times.

## **SINGLE FLANGE PANEL**



This full width flat panel has been developed to be more effective on platforms and as part of a complete matrix at wider level crossings/wideways.

## **FLANGELESS FLAT PANEL**



**IDEAL FOR USE  
ON PLATFORMS**

# The Rosehill Rail range of Anti-Trespass panels are simple to install.



Install with a 45mm nut setter and power screwdriver.



Simply fix the panel to the supplied plastic plank.



Easy to adapt to site specific requirements with the use of a reciprocating saw.

				
Panel Type	<b>DOUBLE FLANGE - STANDARD</b>	<b>SINGLE FLANGE</b>	<b>FLANGELESS / FLAT</b>	<b>FIXING KIT</b>
Rosehill Drawing No	RH-9030	RH-9032	RH-9031	n/a
Rosehill Product Code	RCP ANTI TRESPASS	RCP ANTI TRESPASS / 1	RCP ANTI TRESPASS / 0	RCP AT FIXING KIT
Network Rail Catalogue No	0057 / 068494	0057 / 024900	0057 / 024901	0057/024902

The latest approval by Network Rail, granted acceptance to three variations of our unique anti-trespass panels.

The new format of anti-trespass panels were developed from feedback derived from our customers. With demand for panels coming not only from the UK but also from Holland, France, Belgium, Turkey, Australia, Portugal and others, it is clear that these panels are proving increasingly popular for a variety of reasons.

Not only were they re-designed to provide a greater deterrent, but also to minimise installation time and to provide a better end product that meets the requirements of railway administrations. Made from 100% recycled rubber, these panels are truly environmentally friendly.

All panels are delivered complete with plastic 'planks' and fixing screws to enable immediate mobilisation.

Extra fixing kits are available (in addition to those automatically supplied with each panel). Each kit comprises of 2 'planks' made from re-cycled plastic together with 8 fixing screws and washers.

The plastic 'planks' maintain our tradition of providing products made from recycled materials.



## » ROSEHILL RAIL SALES



Spring Bank Mills  
 Watson Mill Lane  
 Sowerby Bridge  
 West Yorkshire HX6 3BW  
 United Kingdom

Phone +44 (0)1422 839 456  
 Fax +44 (0)1422 316 952  
 Email [info@rosehillrail.com](mailto:info@rosehillrail.com)  
 Web [www.rosehillrail.com](http://www.rosehillrail.com)

